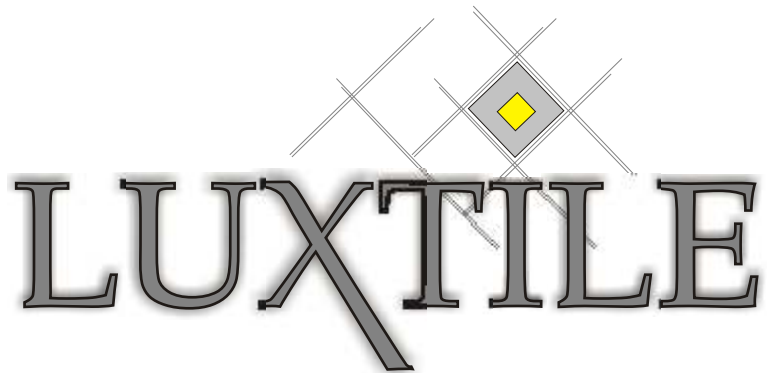


Installation Guidelines

Assembly Instructions
(Floor and wall)



Contents

Assembly Instruction (Floor and Wall)

Contents	2
Testing	3
Installation (general informations)	4
Installation	5
Hints and Solutions	6
Own Inscriptions	7
Contact	8

Test

Each LUXTILE® System consists of 3 components:

1. The Lightsource
2. The optical cables
3. The LUXTILE® Inlays

Follow the Installation- and Security Advice for the Lightsource.

Before the Installation the LUXTILE® Lightsystem has to be checked. The mains plug of the Lightsource has to be connected with the public supply mains.

The standard Lightsource LQSF100 has to be switched on at the back of the encasement.

The Lightsource should give light. If it is not working notice the hints for the Lightsource or contact us.

Next you have to check the colouring system.

Connect the main plug of the colour changing system to the public supply mains. The colours, depending on the Lightsource, have to change. (LQSF100: white, yellow, green, blue, red, violett)

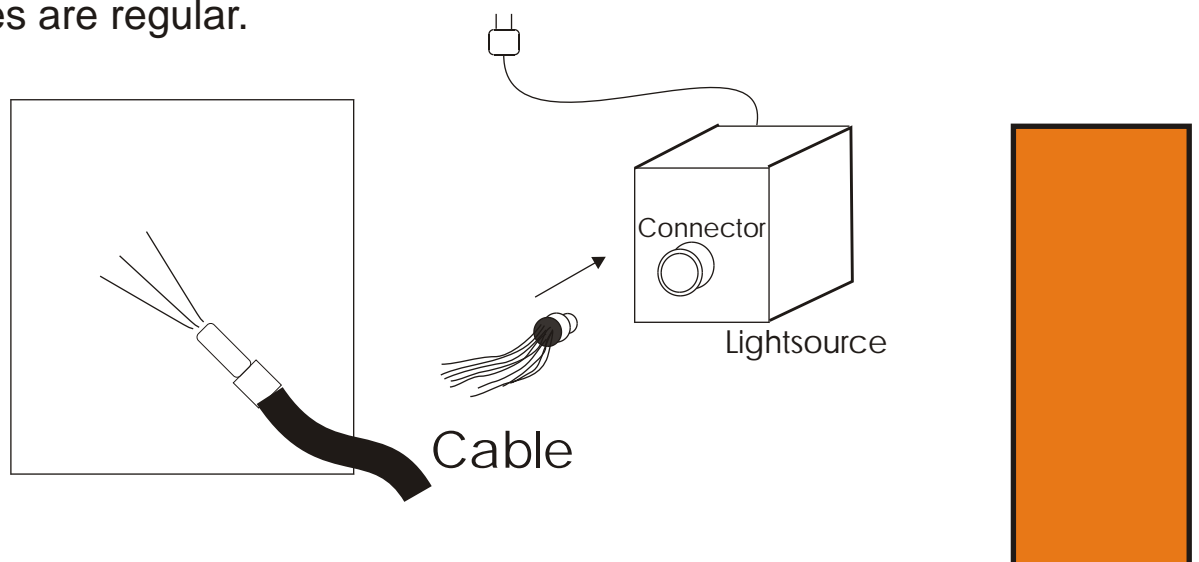
Check if the colours are changing.

Connect the end of the fibre optic bundle to the connector of the Lightsource. Check each single fibre optic cable!

Do not look directly into the ends of the cables!

Check if each cable has the same intensity of lighting.

Minor changes of the intensity depending on the length of the cables are regular.



Installation

(General Information)

The cables of our Lightsystem are fibre optical cables.

These cables conduct light and **no** electricity!

The cables can be destroyed by violence similar to the electrical cables. The smallest bending radius is about 3cm.

Do not step on the cables during the installation because the cables can be damaged.

Each LUXTILE® Inlay has at least one connector at its back for the cable. As soon as the end of the cable is connected with the designated connector at the back of the LUXTILE® Inlay the tile can be laid such as a regular tile.

There must not be dirt either at the end of the cable or the connector of the LUXTILE® Inlays!

Should there be dirt despite all that you can clean the ends of the cables and the connector of the LUXTILE® Inlay with clear water.

During the Installation the Lightsource has to be switched on and after each connection of a LUXTILE® Inlay you have to check if it is lighting!.

Once the LUXTILE® Inlay is installed water, tile adhesive and dirt are no more problem.

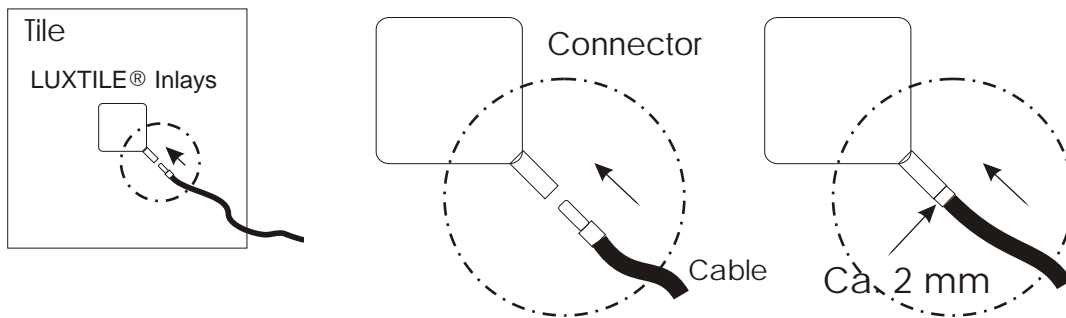
We recommend to start laying the tiles with the farrest LUXTILE® Inlay and going closer to the Lightsource.

Remember that some LUXTILE® Inlays have more than one connector.



Installation

Please read the general information before installation. Bring in the big end of the fibre bundle to the connector of the Lightsource. Arrange the single cables. Insert the ends of the cables to the connector at the back of the LUXTILE® Inlays. The insertion should go easily and must not be forced! You can use the end of a pencil, a small stick of wood or your finger nails to push in the end into the connector. Do not put pressure on the connector at the cable and the connector of the LUXTILE® Inlays. The cable fits when there are about 2mm of the connector at the cable left out of the connector at the LUXTILE® Inlays.



Switch on the Lightsource during installation and check after each connection if the LUXTILE® Inlays are lighted correctly!

Should there be differences in lighting please check the connectors for dirt or dust. The connectors of the LUXTILE® Inlays can be cleaned easily with clear water.

If the lighting is ok you can install your covering material depending on the installation guide of the producer of the covering material.

The LUXTILE® Inlay must not lie hollow! Always there has to be enough tile adhesive or other material below!

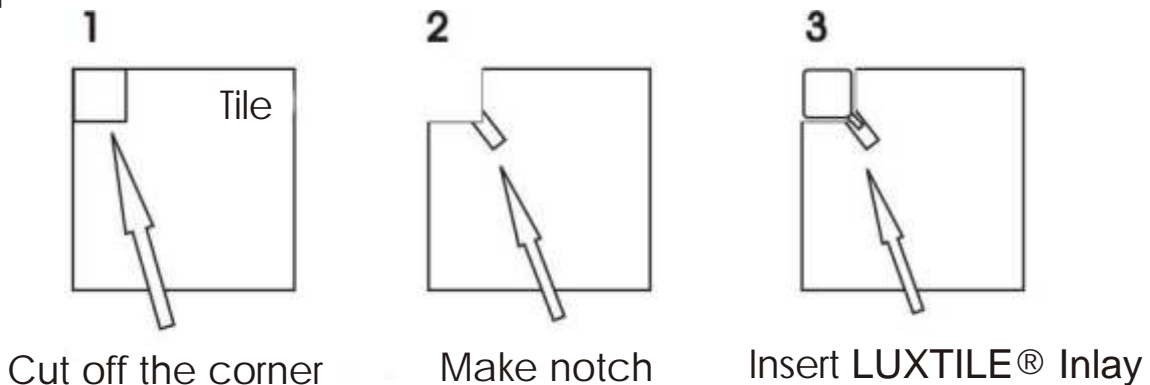
Remember that some LUXTILE® Inlays have more than one connector.

For improper installation we do not assume any liability!

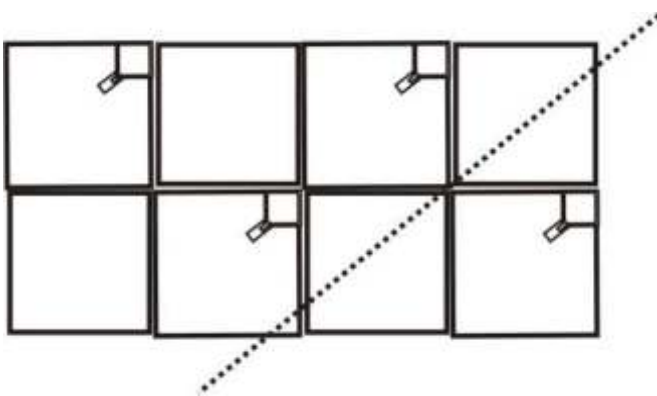
Hint for the installation:

If you set the LUXTILE® Inlays at the corners of the tiles you have to make a notch at the back of the tile.

This work should be done before the installation because this simplifies the installation later on.



Install all LUXTILE® Inlay in similar formation. All connectors should have the same alignment towards the Lightsource.



Alignment of the LUXTILE® Inlays

Solutions for some problems:

If you pull out the cable of the connector and the connector at the cable end loosens:

- The connector can be fixed again with hot-melt adhesive.
Check the connector for dirt and if necessary clean it.

A cable is too short:

- Call your local dealer and order a cable extension.

In case of improper treatment a cable is broken:

- Shorten the cable and fix a new connector. Polish the cable end and use a cable extension.

For further information contact us or your local dealer.

LUXTILE Lichtideen

Westring 56a

D - 37269 Eschwege

Tel.: +49 (0) 5651 952381

Fax: +49 (0) 5651 952384

email: info@luxtile.de

www.luxtile.de

